

The logo features a green square containing a white lowercase letter 'i'. To the right of this square is the word "inform" in a white, lowercase, sans-serif font, followed by a trademark symbol (™). Below this, the words "Remote Monitoring" are written in a larger, white, sans-serif font.

inform™ Remote Monitoring

Available in LEV Series
Mechanical Interlocks and
Powerswitch® Disconnect
Switches

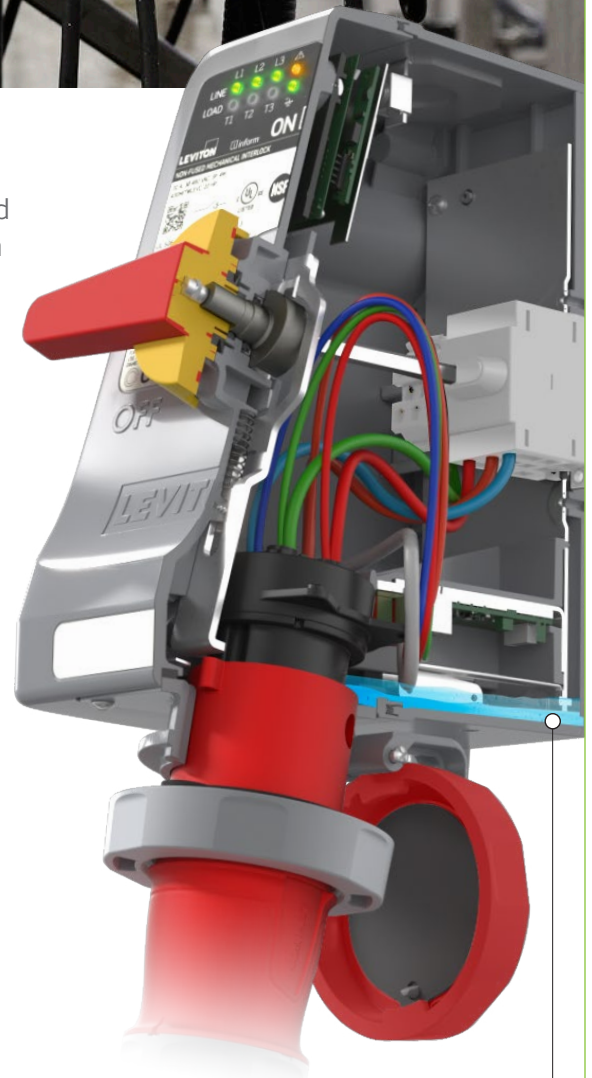
By adding sensors to our devices, users can continually monitor their device health and performance. Using advanced analytics, actionable insights are pulled from the sensor data and immediately notify the end-user if there are abnormal operating conditions or a device failure.

**Remote Monitoring via Wi-Fi or
Modbus RTU allows for 24/7 access
to insights of all devices, such as:**

- Ground continuity
- Line- and load-side voltage values
- Enclosure temperature
- Enclosure humidity
- Liquid accumulation
- Support materials
- And more!

**Understand what's going on inside your
electrical devices without having to open them.**

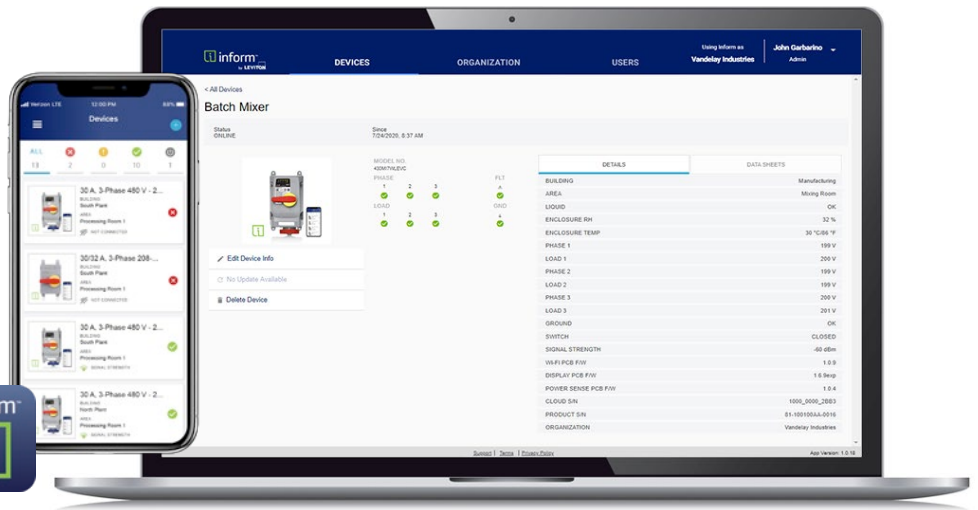
- Accelerate response time to abnormal conditions
- Improve safety of staff and operations
- Minimize unplanned downtime



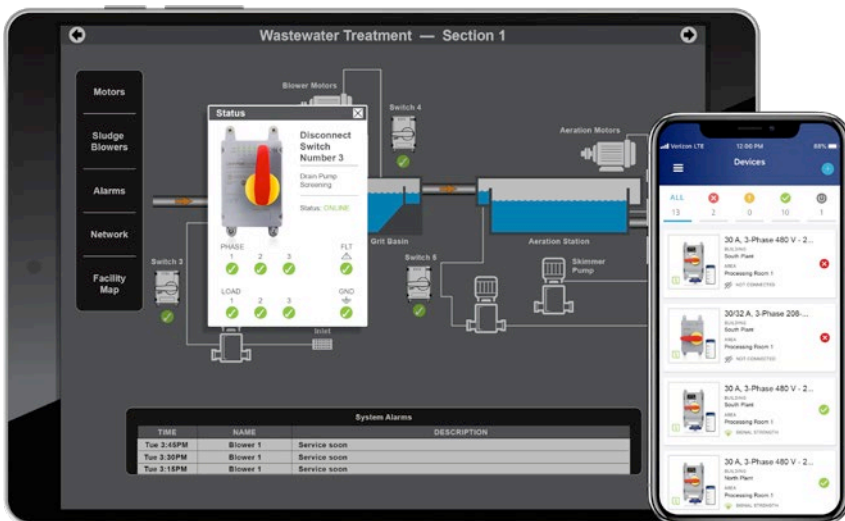
Sensors identify liquid
accumulation inside
the enclosure

Monitor all installed devices from a single dashboard

The Leviton Inform mobile app is available on:



The Leviton Inform desktop app is available at: inform.leviton.com



Allows for flexible integration into existing software systems



DID YOU KNOW
Unplanned downtime costs 10 times more than planned downtime?

Unplanned downtime equals lost orders and missed opportunities, lost production, wasted labor and excess inventory.

Learn more at: www.leviton.com/inform • Email: industrial@leviton.com